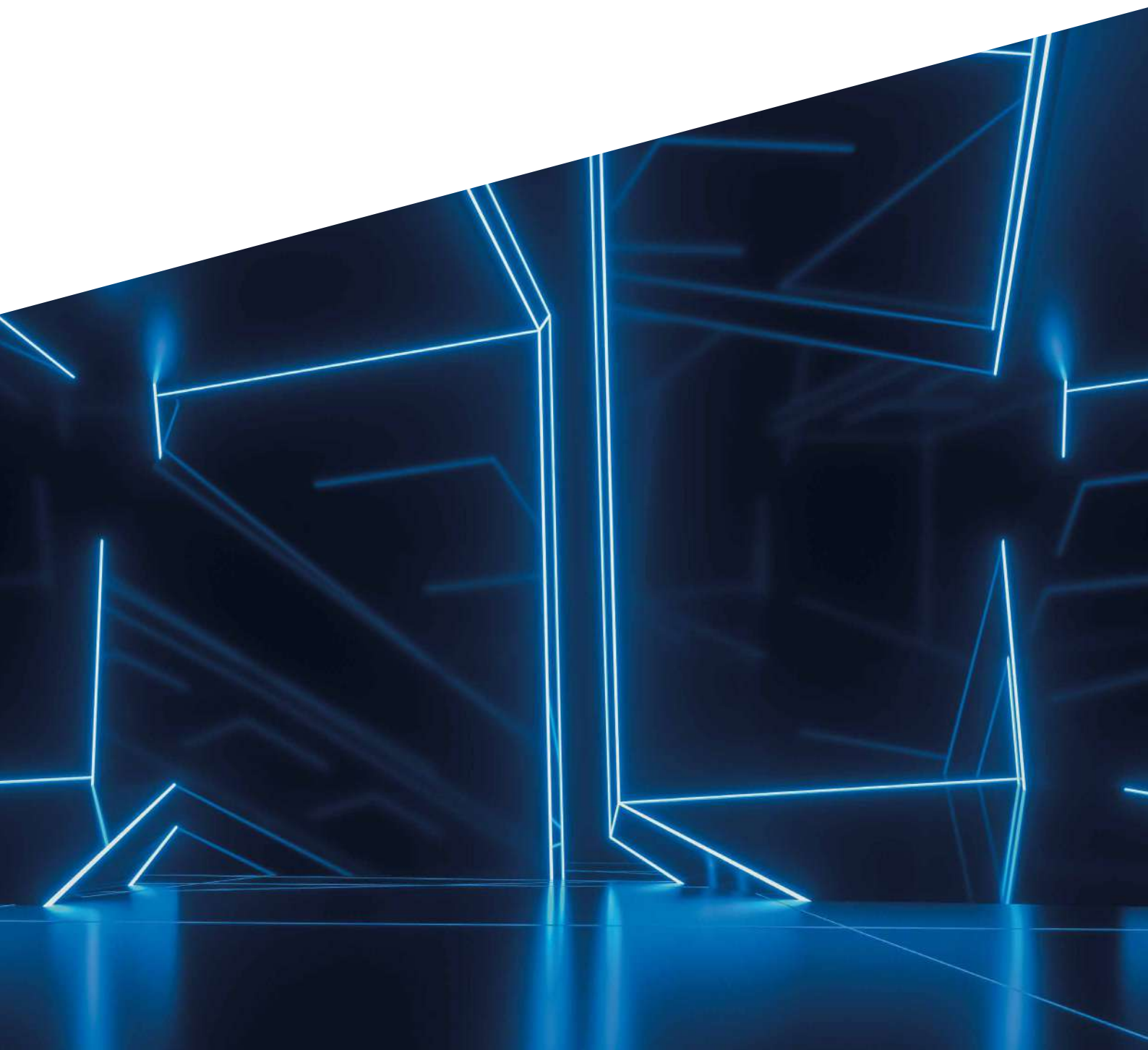


INDUSTRIAL – NEW PRODUCTS 2023

Components for electrical enclosures,
energy management, industrial automation and IECEx - Atex



ABOUT US



Finder was founded in Italy in 1954. Since then it has been designing and manufacturing a wide range of electromechanical and electronic components for both the residential and industrial sectors.

Today, thanks to its global vision, Finder now distributes its products around the world through a network of 29 company-owned subsidiaries and more than 80 trade partnerships.

Finder is an international family made up of more than 1300 individuals, all united by the same values and passion for our products.



14,500 different products to satisfy a myriad of applications. From products at the heart of automation to the control of machines, power, time, temperature, liquid level and light



OUR PRODUCTS
CARRY MORE
CERTIFICATIONS
THAN ANY
OTHER RELAY
MANUFACTURER

FINDER IS AN ITALIAN BRAND WITH A WORLDWIDE PRESENCE

- 4** PRODUCTION PLANTS IN EUROPE
- 29** SUBSIDIARIES
- +80** OFFICIAL DISTRIBUTORS



ENVIRONMENTAL, SOCIAL AND GOVERNANCE (ESG)

Finder considers social and environmental sustainability as fundamental principles of doing business, just as it believes that business growth must develop in synergy with a conscious vision of the future.

That is why Finder is committed to reducing and eliminating CO2 emissions, focusing on circularity, caring for its employees to foster a safe, fair and inclusive work environment, spreading a culture of integrity and transparency, and collaborating with stakeholders who share its values.

This focus is demonstrated by the company's commitment to the following internationally recognized projects and certifications:



ISO 9001:2015
Quality management system



ISO 14001:2015
Environmental management system



ISO 45001:2018
Health and safety management system



ISO 14064-1 2018
Carbon Footprint verification



FSC Forest Stewardship Council



AEOF Simplified customs and enhanced supply chain security



Cribis Prime Company Recognition of highest reliability of commercial relations

Contents

8A Series - OPTA - PROGRAMMABLE LOGIC RELAYS (PLR)	page	2
8A Series - OPTA - EXPANSION MODULES	page	4
78 Series - OPTA - Power supply	page	7
83 Series - Modular timers	page	8
6M Series - Modbus power analyzer	page	9
7M Series - Smart energy meters	page	10
6K Series - Industrial Contactors	page	12
77 Series - Solid State Relays (SSR)	page	14
7U Series - Power outlets for electrical enclosures	page	16
7F Series - Filter fans and exhaust filters	page	17

OPTA

PROGRAMMABLE LOGIC RELAYS

8A Series



THE UNIQUE NEW PROGRAMMABLE LOGIC RELAY

Free programmable with ARDUINO IDE or ARDUINO PLC-IDE for IEC 61131-3 languages

Easily create applications for industrial automation, OEM and building automation



POWERFUL



CONNECTED



SECURE



OPEN SOURCE



EASY



VERSATILE



OPTA

PROGRAMMABLE LOGIC RELAYS

8A Series

OPTA RANGE

LITE



Type 8A.04.9.024.8300

- Supply 12...24 V DC
- 8 Digital/Analog (0-10 V) input
- 4 NO relay output contacts, rated 10 A
- USB (type C) High Speed port for:
 - Programming
 - Data logging (via memory stick)
- RJ45 for Ethernet connections or MODBUS TCP/IP

PLUS
+ RS485



Type 8A.04.9.024.8310

- Supply 12...24 V DC
- 8 Digital/Analog (0-10V) input
- 4 NO relay output contacts, rated 10 A
- USB (type C) High Speed port for:
 - Programming
 - Data logging (via memory stick)
- RJ45 for Ethernet connections or MODBUS TCP/IP
- RS485 Port for MODBUS RTU connection

ADVANCED
+ WIFI and BLE



Type 8A.04.9.024.8320

- Supply 12...24 V DC
- 8 Digital/Analog (0-10V) input
- 4 NO relay output contacts, rated 10 A
- USB (type C) High Speed port for:
 - Programming
 - Data logging (via memory stick)
- RJ45 for Ethernet connections or MODBUS TCP/IP
- RS485 Port for MODBUS RTU connection
- WIFI/BLE integrated module



POWER
SUPPLY



Type 78.12.1.230.2482

- 24 V DC power supplies
- Peak current: 2A
- 15 W, only one module wide (17,5mm)
- Short circuit protection
- Thermal protection
- Overvoltage protection
- SELV



OPTA

EXPANSION MODULES



EASILY EXPAND THE PLR'S POTENTIAL
FOR GREATER FLEXIBILITY



OEM
PROJECTS



BUILDING
AUTOMATION



INDUSTRY
4.0



ARDUINO PRO™



OPTA

EXPANSION MODULES

EXPANSION RANGE



Type 8A.58.9.024.1600

- 16 digital/analog (0...10 V) inputs
- 8 EMR 6A outputs
- Nominal voltage 12...24 V DC



Type 8A.88.9.024.1600

- 16 digital/analog (0...10 V) inputs
- 8 SSR 2A outputs
- Nominal voltage 12...24 V DC



Type 8A.26.9.024.0600

- 6 analog 0...10 V, 4...20 mA, PT 100/1000 inputs
- 2 analog 0...10 V, 4...20 mA outputs
- 4 PWM outputs
- Nominal voltage 24 V DC

opta.findernet.com



ARDUINO PRO™



OPTA

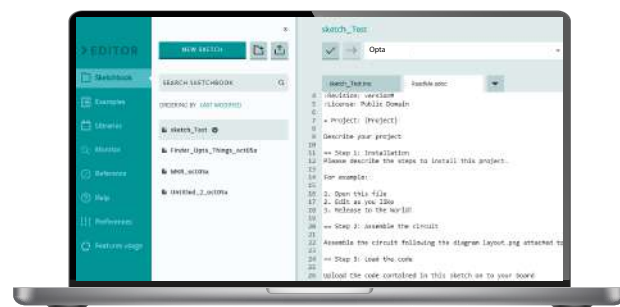
ALL THE PROGRAMMING LANGUAGES YOU NEED

FREE – WITHOUT LICENCES

Using ARDUINO IDE,
the Open-Source Arduino Software

LICENSED - TRADITIONAL

Using ARDUINO PLC-IDE for
traditional language IEC 61131-3



*designed
for cyber
security*

A SUPER POWERFUL PROCESSOR

PROCESSOR ST dual-core Cortex® M7+M4

Super fast real-time processing to manage
calculations for predictive maintenance
and OTA (Over-The-Air) updates

CRYPTO CHIP

Enhanced IoT security thanks to the
onboard secure element chip



Powerful



Connected



Secure



Open Source



Easy



Versatile

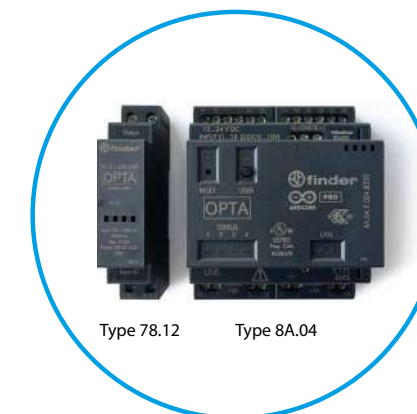
78 Series – OPTA Power Supply

Compact DC power supply, designed for use with OPTA

- 24 V DC, 15 W output
- 17.5 mm wide
- High peak output current
- Suitable for SELV applications
- Thermal, overload and short-circuit protection
- 12 W at 50 °C
- UL certified



Type 78.12.1.230.2482



Type 78.12

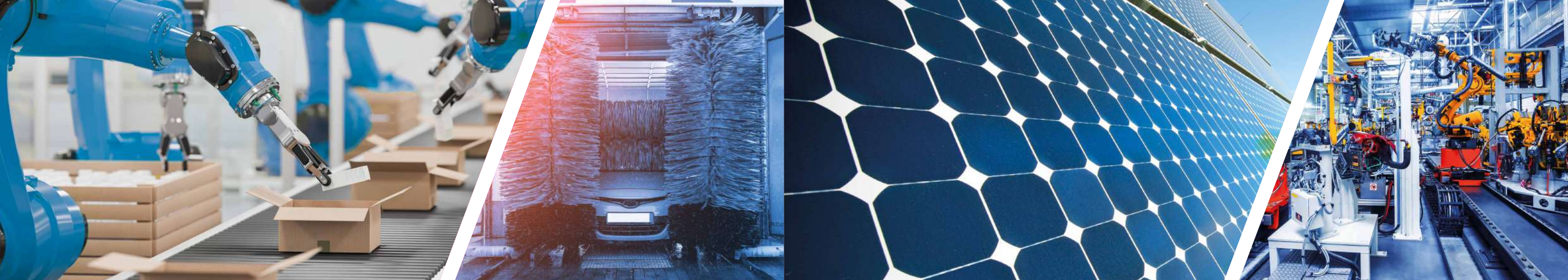
Type 8A.04



78 Series
See technical
data sheet

Approvals





Packaging machines



Automatic car-washes



Industrial automation



Panels for electrical distribution



Pump control



Charging Stations



Energy management



Inverters



Industrial automation



Panels for electrical distribution



PV applications

83 Series - IECEx Modular Timer



- Multifunction, multi-voltage IECEx, Ex (Zone 2, Category 3), HazLoc (CI I, Div.2) timer
- 2 possible working way: 2 timed contacts or 1 timed + 1 instantaneous
- Timing can be regulated also using an external potentiometer



Type 83.02.0.240.0003

- $U_n = 24 \dots 240$ V AC/DC
- 2 Change over contact, 277 V AC, 10 A
- **ATEX:** II 3 G Ex ec nC IIC T4 Gc
- **IECEx:** Ex ec nC IIC T4 Gc
- **HazLoc:** CI I, Div2, Gr A, B, C, D, T4, CI I, Zn 2, AEx ec nC IIC T4, Ex ec nC IIC T4 Gc X

6M Series – Modbus power analyzer products

Single phase Modbus quality power Monitors

All-in-one CT, Power/Energy meter and Supply quality monitor + Modbus communications.

- True-RMS AC and DC measurements
- Accuracy class: 0.5% F.S.
- Measurement: up to 300 A - 800 V AC - up to 400 A - 1000 V DC
- Bi-directional active energy measurement kWh
- Working frequency: DC or 1...400 Hz
- Fully configurable via Modbus RS485 interface (free software)



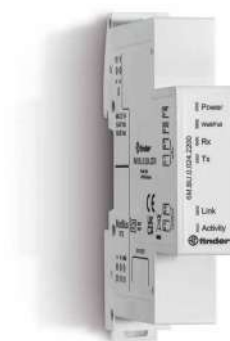
Type 6M.TA.9.024.1200
50 A - 800 V AC/1000 V DC



Type 6M.TB.9.024.1200
100 A - 800 V AC/1000 V DC



Type 6M.TF.9.024.1200
300 A - 800 V AC,
400 A - 1000 V DC



Type 6M.BU.0.024.2200
Modbus RS485 RTU - Modbus TCP/IP Gateway
with on board web server interface.

- Ethernet com port: 10/100 Mb/s (Max 10 Client)
- Modbus RTU com port: RS485 up to 115.200 bit/s (Max 200 slave)
- User interface: 6 LED
- Insulation between power supply, RS485, Ethernet: 1500 V



83 Series
See technical
data sheet

Approvals
(according to type)



6M Series
See technical
data sheet

Approvals
(according to type)





Charging
Stations



Energy
management



Inverters



Industrial
automation



Panels for electrical
distribution



PV
applications



NFC
technology

7M Series – Smart Energy meters

**Energy meters with NFC technology,
MID certified at 70°C and RS485 Modbus integrated interface.**

Ideally suited for electric vehicle charging systems as well as other single and three phase systems,
3 or 4 wire, with rated currents up to 80 A.

NFC technology allows reading the measured energy even in the absence of mains voltage,
and to program and customize the counters via smartphone.



Type 7M.24.8.230.0210
NFC - Modbus RS485

- Single phase systems
- Rated current 40 A – 70°C
- Counters for active imported and exported energy
- MID certified
- 8 resettable counters, customized via the App



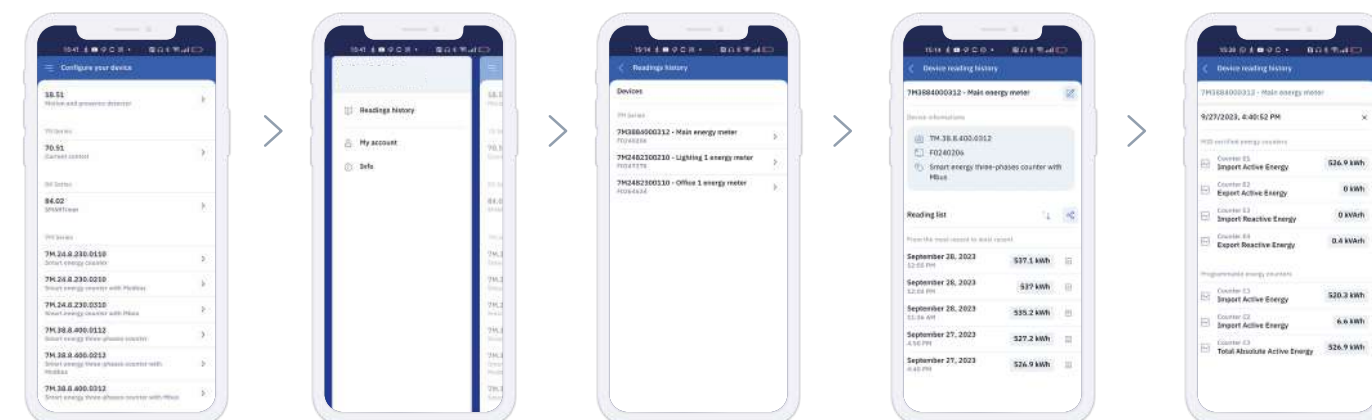
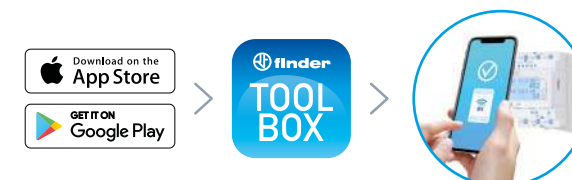
Type 7M.38.8.400.0212
NFC - Modbus RS485

- Three phase systems with or without neutral or for single phase systems
- Rated current 80 A – 70°C
- Counters for active imported and exported energy
- MID certified
- 16 resettable counters, customized via the App

7M Series – Toolbox App

With the last update of Toolbox App and thanks to the NFC technology is possible to:

- store on Finder cloud the energy measurements done with 7M energy meter
- easily check the consumption trend on your smartphone
- send to your mail address a CSV file to create graph and analyse the power consumption with your PC
- name the meter to easy recognize it and the energy measured (eg. meter for Mr Finder's car box)
- no annual fee to store your data



7M Series
See technical
data sheet

Approvals
(according to type)





Power
generators



Back-up
generators



Industrial
motors



Panels for electrical
distribution



Pump
control

6K Series - Industrial Contactors

New three or four-pole industrial contactors 6K Series for powers from 4 up to 37 kW in AC3 according to IEC/EN 60947. Possible connection of front auxiliary modules from 1 to 4 poles in various configurations.

- 3 Contacts NO from 4 kW to 37 kW AC3, from 9 A to 74 A
- According to EN 60947 / IEC 947
- Nominal voltage 120 V AC, 230 V AC, 24 V AC
- 1 Auxiliary contact NO or NC (according to type) 3 A
- Auxiliary block contact 3 A in various configurations available
- AgSnO2 material contact
- 35 mm Din rail mounting



Type 6K.04.8.230.4809

9 A - 400 V AC3
4 kW



Type 6K.14.8.230.4810

10 A - 400 V AC3
4 kW



Type 06K.11

3 A - 400 V AC3
1 NO

Type 06K.12

3 A - 400 V AC3
1 NC



Type 06K.03

3 A - 400 V AC3
1 NO + 1 NC



Type 6K.13.8.230.4324

24 A - 400 V AC3
11 kW



Type 6K.13.8.230.4350

74 A - 400 V AC3
37 kW

Approvals

Approvals



Drying
kilns



Industrial furnaces
and ovens



Industrial
motors



Packaging
machines



Lights
control



Bottling
plant

77 Series – Solid State Relays (SSR)

New Solid State Relay "Hockey puck" case for single phase application up to 125 A, dual phase with 2 independent channel up to 75A and for three phase system up to 80A.



Type 77.x1

- Single phase SSR with SCR power output device
- Nominal switching (load) current: 25, 40, 60, 80, 100 or 125 A versions
- 2 different versions for different nominal output voltage: 230 V AC and 600 V AC: "8250" version: 24...280 V AC load voltage, Zero Crossing switching "8650" version: 24...660 V AC load voltage, Zero Crossing switching
- Nominal coil voltage: 24 V DC or 230 V AC
- Dielectric strength: 4000 V AC



Type 77.x2

- Dual phase SSR with 2 independent channel
- Dual independent SCR power output
- Nominal switching (load) current: 25, 50, 75 A versions
- 600 V AC output voltage in Random switching mode
- Nominal coil voltage: 24 V DC
- Dielectric strength: 4000 V AC



Type 77.x3

- Three phase SSR with SCR output power device
- Nominal switching current load: 25, 40, 60 or 80 A
- 600 V AC output voltage in Random switching mode
- Nominal coil voltage: 24 V DC or 230 V AC
- Dielectric strength: 4000 V AC

Approvals
(according to type)



Approvals
(according to type)





Panels for electrical
distribution



Control
panels



Drying
kilns



Panels for electrical
distribution



Control
panels



Forced-air
ventilators

7U Series – Power outlets for electrical enclosures

For a secure and approved power outlet for use within electrical enclosures.
Voltage indication LED version available.

- Nominal voltage: 230 V AC or 125 V AC (USA version)
- Nominal current: up to 16 A; 15 A (USA version)
- Voltage indication LED version available
- 45 mm wide
- 35 mm rail (EN 60715) mount

Compatible with Schuko
+ Italian Bipasso

Compatible with
French systems

Compatible with
US systems



Type 7U.00.8.230.0010 (Grey RAL 7035)
Type 7U.00.8.230.0002 (Yellow RAL 1021)



Type 7U.01.8.230.0000 (Grey RAL 7035)
Type 7U.01.8.230.0012 (Yellow RAL 1021)



Type 7U.02.8.125.0010
(Grey RAL 7035)

7F Series – Filter fans and exhaust filters for outdoor applications

To ensure the performance of the components
and instrumentation inside control panels
and enclosures also in outdoor applications

- Nominal voltages 120 V AC, 230 V AC
or 24 V DC (depending on types)
- Internal filter easily replaceable
- Minimum external dimensions
- Air flow (24...700)m³/h
- Reduced installation and maintenance times
thanks to the quick coupling system
- Extremely low noise
- IP54/Type 3R protection rating
- Grey color RAL 7000



Type 7F.38.8.xxx.4400
for outdoor use



7U Series
See technical
data sheet

Approvals
(according to type)



7F Series
See technical
data sheet

Approvals
(according to type)





FINDER S.p.A. sole proprietorship

Via Drubiaglio, 14
10040, ALMESE (TO) ITALY
tel +39 011 9346211
export@findernet.com

findernet.com



FINDER INVDIA PVT. LTD.

C-94, Lower Ground,
Upper ground, First floor,
Mangolpuri Industrial Area,
Phase -1, New Delhi - 110083, INDIA
Tel. +91-11-47564343
Fax. +91-11-47564344

