

77 SERIES
Solid State Relays (SSR)

NEW



Range of modular and “hockey puck”
Industrial Solid State Relays (SSR)
77 Series

Particularly suitable for resistive loads and for industrial applications where high switching frequencies and high inrush currents can be problematic.

- Versions available for “Zero Crossing” or “Random” switching
- High-speed switching and high electrical life
- Silent switching without electric arcing or “contact” bounce

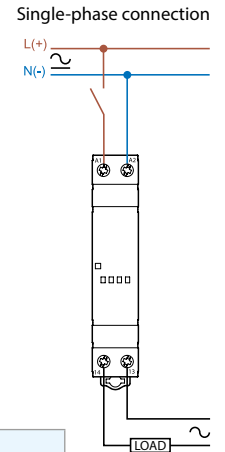
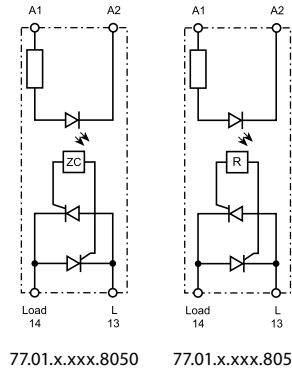


5 A modular SSR, 1 NO AC output

- 60 to 240 V AC output (with back to back SCR)
- 5 kV (1.2/50 μ s) insulation between Input and Output
- 3-phase general purpose
- 17.5 mm wide

- Zero-crossing switch-on - Suggested applications:
- Lamp inrush current reduction (CFL - Compact Fluorescent energy-saving Lamps and similar)
 - Heater control
 - Solenoid, contactor driver

- Random switch-on - Suggested applications:
- Finer control requiring short operate time (specially motor control)
 - AC Input phase different from AC Output phase



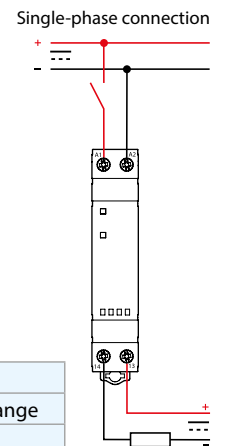
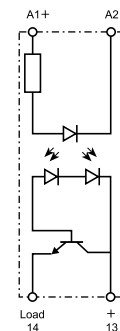
Type	Maximum peak current (10 ms)	Switching characteristic	Input	Output	
			Operating range	Rated current	Switching voltage range
77.01.9.024.8050	300 A	Zero Crossing	(4...32)V DC	5 A	(48...265)V AC
77.01.9.024.8051	300 A	Random	(4...32)V DC	5 A	(48...265)V AC
77.01.8.230.8050	300 A	Zero Crossing	(90...265)V AC	5 A	(48...265)V AC
77.01.8.230.8051	300 A	Random	(90...265)V AC	5 A	(48...265)V AC



7 - 15 A modular SSR, 1 NO DC output

- 2 versions, for 24 and 125 V DC mosfet output
- 4 kV (1.2/50 μ s) insulation between Input and Output
- Short circuit protection
- 17.5 mm wide

- Suitable for railway applications
- Applications in Energy, Automation and Machines:
- Control of electric, pneumatic and hydraulic electromagnetic valves
 - Direct control of loads such as motors and electromagnets



Type	Maximum peak current (10 ms)	Switching characteristic	Input	Output	
			Operating range	Rated current	Switching voltage range
77.01.9.024.9024	160 A	Fast turn ON	(4...32)V DC	15 A	(16...32)V DC
77.01.9.024.9125	60 A	Fast turn ON	(4...32)V DC	7 A	(43...140)V DC

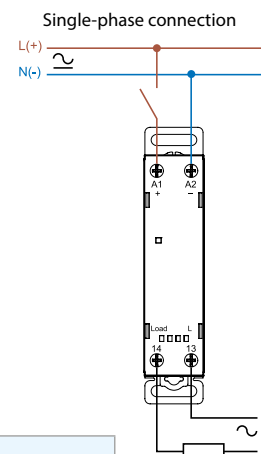
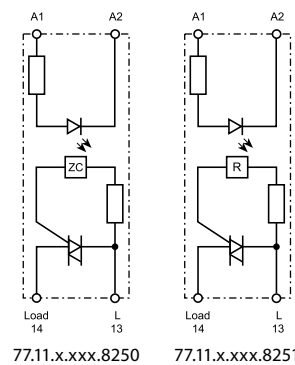


15 A modular SSR, 1 NO output

- 24 to 277 V AC output (with TRIAC)
- 6 kV (1.2/50 μ s) insulation between Input and Output
- "Relay-style" terminal arrangement (input and output terminals on opposite sides)
- 3-phase general purpose
- 22.5 mm wide

- Zero-crossing switch-on - Suggested applications:
- Lamp inrush current reduction (CFL - Compact Fluorescent energy-saving Lamps and similar)
 - Heater control
 - Solenoid, contactor driver

- Random switch-on - Suggested applications:
- Fine controls involving shorter time (specially motor control)



Type	Maximum peak current (10 ms)	Switching characteristic	Input	Output	
			Operating range	Rated current	Switching voltage range
77.11.9.024.8250	400 A	Zero Crossing	(4...32)V DC	15 A	(19...305)V AC
77.11.9.024.8251	400 A	Random	(4...32)V DC	15 A	(19...305)V AC
77.11.8.230.8250	400 A	Zero Crossing	(40...305)V AC	15 A	(19...305)V AC
77.11.8.230.8251	400 A	Random	(40...305)V AC	15 A	(19...305)V AC



25 A modular SSR, 1 NO output

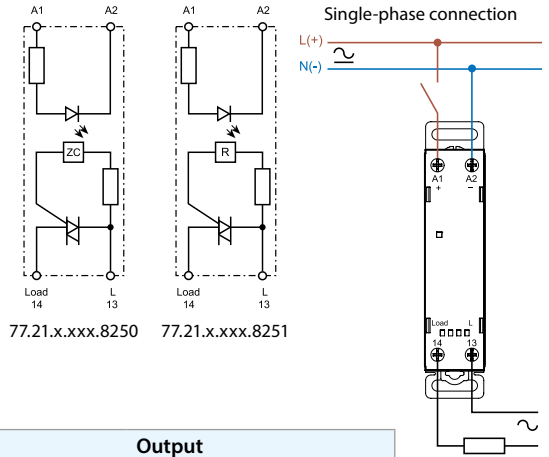
- 24 to 277 V AC output (with TRIAC)
- 6 kV (1.2/50 μ s) insulation between Input and Output
- "Relay-style" terminal arrangement (input and output terminals on opposite sides)
- 3-phase general purpose
- 22.5 mm wide

Zero-crossing switch-on - Suggested applications:

- Lamp inrush current reduction (CFL - Compact Fluorescent energy-saving Lamps and similar)
- Heater control
- Solenoid, contactor driver

Random switch-on - Suggested applications:

- Finer control requiring short operate time (specially motor control)



77.21.x.xxx.8250 77.21.x.xxx.8251

Type	Maximum peak current (10 ms)	Switching characteristic	Input	Output	
			Operating range	Rated current	Switching voltage range
77.21.9.024.8250	400 A	Zero Crossing	(4...32)V DC	25 A	(19...305)V AC
77.21.9.024.8251	400 A	Random	(4...32)V DC	25 A	(19...305)V AC
77.21.8.230.8250	400 A	Zero Crossing	(40...305)V AC	25 A	(19...305)V AC
77.21.8.230.8251	400 A	Random	(40...305)V AC	25 A	(19...305)V AC



30 A modular SSR, 1 NO output

- 60 to 440 V AC output (with back to back SCR)
- 6 kV (1.2/50 μ s) insulation between Input and Output
- "Relay-style" terminal arrangement (input and output terminals on opposite sides)
- "Contactor-style" terminal arrangement (input and output terminals on adjacent sides)
- 3-phase general purpose
- 22.5 mm wide

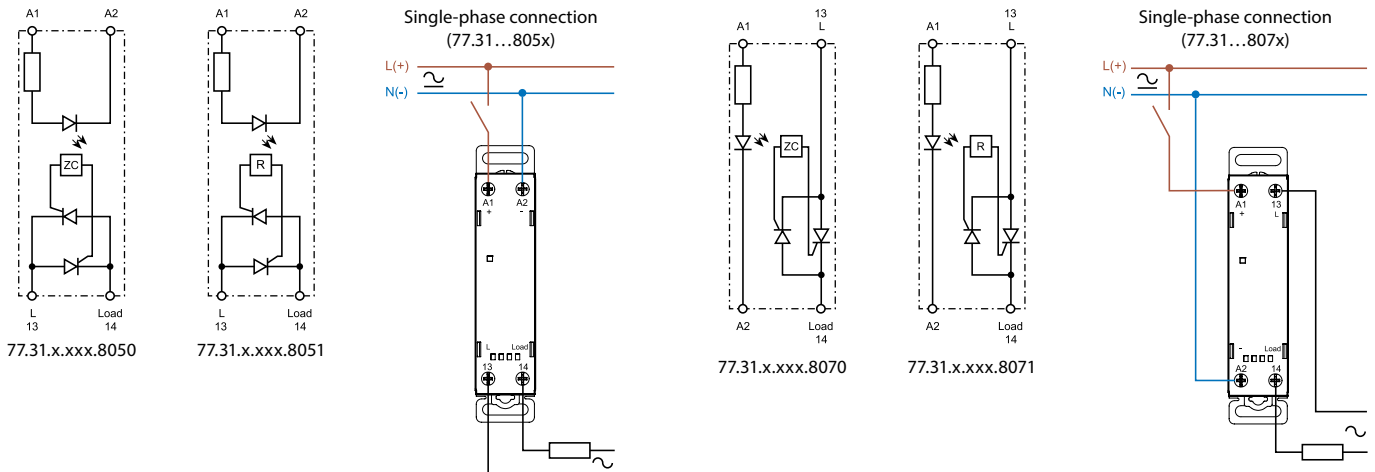
Zero-crossing switch-on - Suggested applications:

- Lamp inrush current reduction (CFL - Compact Fluorescent energy-saving Lamps and similar)
- Heater control
- Solenoid, contactor driver

Random switch-on - Suggested applications:

- Finer control requiring short operate time (specially motor control)

Type "Relay-style"	Type "Contactor-style"	Maximum peak current (10 ms)	Switching characteristic	Input	Output	
				Operating range	Rated current	Switching voltage range
77.31.9.024.8050	77.31.9.024.8070	520 A	Zero Crossing	(4...32)V DC	30 A	(48...480)V AC
77.31.9.024.8051	77.31.9.024.8071	520 A	Random	(4...32)V DC	30 A	(48...480)V AC
77.31.8.230.8050	77.31.8.230.8070	520 A	Zero Crossing	(40...280)V AC	30 A	(48...480)V AC
77.31.8.230.8051	77.31.8.230.8071	520 A	Random	(40...280)V AC	30 A	(48...480)V AC



77.31.x.xxx.8050

77.31.x.xxx.8051

77.31.x.xxx.8070

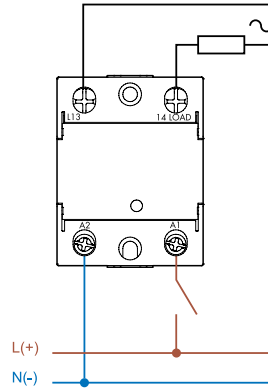
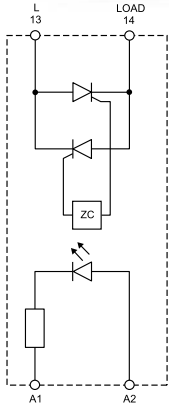
77.31.x.xxx.8071



25 to 125 A panel Zero-crossing SSR, "hockey puck" style

77.A1.x.xxx.8x50	77.B1.x.xxx.8x50	77.D1.x.xxx.8x50	77.F1.x.xxx.8x50	77.G1.x.xxx.8x50	77.H1.x.xxx.8x50
Output 25 A	Output 40 A	Output 60 A	Output 80 A	Output 100 A	Output 125 A

8250: 24 to 280 VAC switching load voltage
8650: 24 to 660 VAC switching load voltage



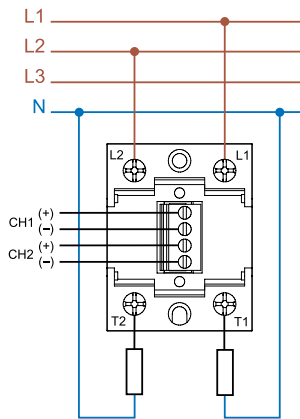
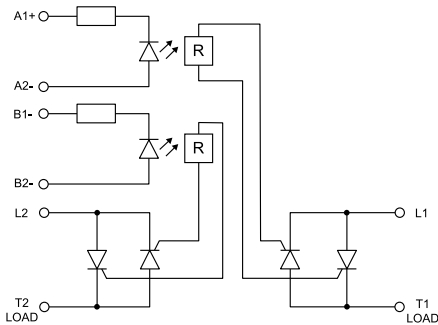
- 1 NO contact
- "hockey puck" housing with folding screw cover
- Low control power

Suggested applications: heater control, lamps, solenoid, contactor driver



25, 50 and 75 A dual phase Random SSR, "hockey puck" style

77.A2.9.024.8671	77.C2.9.024.8671	77.E2.9.024.8671
Output 25 A - 600 V AC	Output 50 A - 600 V AC	Output 75 A - 600 V AC



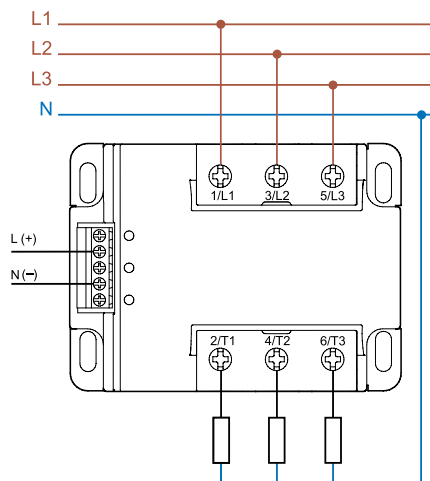
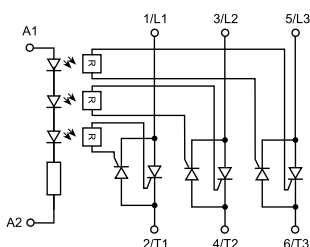
- 2 NO contacts
- Switching voltage range from 24 to 660 V AC
- 2 independent output channel driven by independent low power DC input
- "hockey puck" housing with folding screw cover

Suggested applications: heater or motor control



25 to 80 A three phase Random SSR, "hockey puck" style

77.A3.x.xxx.8671	77.B3.x.xxx.8671	77.D3.x.xxx.8671	77.F3.x.xxx.8671
Output 25 A - 600 V AC	Output 40 A - 600 V AC	Output 60 A - 600 V AC	Output 80 A - 600 V AC



- 3 NO contacts
- Switching voltage range from 24 to 660 V AC
- Low control power

Suggested applications: heater or motor control