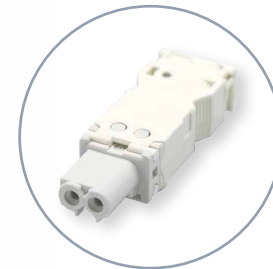


## REPORT

### 7L Series LED Panel Light



Connector  
Type 07L.11  
included in  
the packaging

## LED light for electrical panels – with magnetic mount

- “Two in One” mount - direct magnetic mount or through a screw-mounted metallic bracket
- Brightness levels: 600 or 1200 lumens
- Versions with: 1 - direct switching  
2 - motion detector  
3 - ON/OFF switch
- Power supply - Multi-voltage: (12...48)V AC/DC and (110...240)V AC/DC
- Available with push-in terminals or plug-in terminals

Approvals



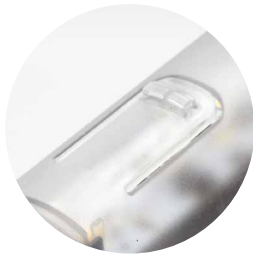
Type 7L.43 (600 lumens)  
Type 7L.46 (1200 lumens)

- Direct magnetic mount or through a screw-mounted metallic bracket
- Power supply: (12...48)V AC/DC and (110...240)V AC/DC
- Nominal power consumption: 6 W (600 lm), 9 W (1200 lm)
- Radiation angle: 120°
- Colour temperature: 5,000 K
- Protection category: IP20

Direct switching



Switching via ON/OFF soft latch switch



Switching via motion detector



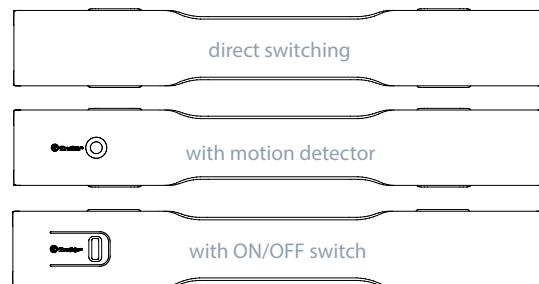
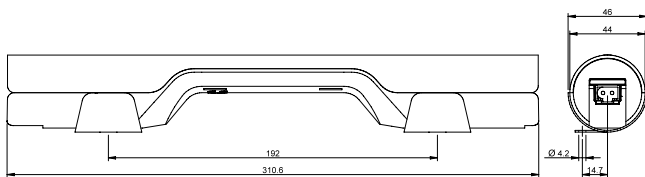
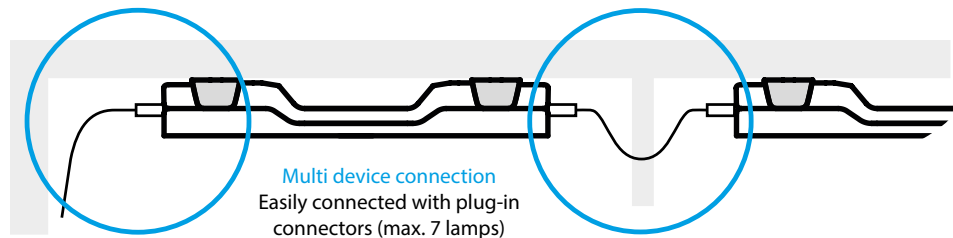
Magnetic mount directly to metallic panel



Magnetic mount via screw-mounted metallic bracket



Quick and simple wiring system via **push-in connectors** for the connection to a single unit, or via **plug-in connectors** for the connection to a single or multiple units.



Part Number	Lumen	Part Number	Lumen	Supply voltage	Switching	Connections
7L.43.0.024.0100	600	<b>7L.46.0.024.0100</b>	<b>1200</b>	024 = (12...48)V AC/DC	<b>Direct switching</b>	Push-in connection
7L.43.0.024.0200	600	<b>7L.46.0.024.0200</b>	<b>1200</b>	024 = (12...48)V AC/DC	<b>Direct switching</b>	Plug-in connection
7L.43.0.230.0100	600	<b>7L.46.0.230.0100</b>	<b>1200</b>	230 = (110...240)V AC/DC	<b>Direct switching</b>	Push-in connection
7L.43.0.230.0200	600	<b>7L.46.0.230.0200</b>	<b>1200</b>	230 = (110...240)V AC/DC	<b>Direct switching</b>	Plug-in connection
7L.43.0.024.1100	600	7L.46.0.024.1100	1200	024 = (12...48)V AC/DC	ON/OFF switch	Push-in connection
7L.43.0.024.1200	600	7L.46.0.024.1200	1200	024 = (12...48)V AC/DC	ON/OFF switch	Plug-in connection
7L.43.0.024.2100	600	7L.46.0.024.2100	1200	024 = (12...48)V AC/DC	PIR - motion detector	Push-in connection
7L.43.0.024.2200	600	7L.46.0.024.2200	1200	024 = (12...48)V AC/DC	PIR - motion detector	Plug-in connection
7L.43.0.230.1100	600	7L.46.0.230.1100	1200	230 = (110...240)V AC/DC	ON/OFF switch	Push-in connection
7L.43.0.230.1200	600	7L.46.0.230.1200	1200	230 = (110...240)V AC/DC	ON/OFF switch	Plug-in connection
7L.43.0.230.2100	600	7L.46.0.230.2100	1200	230 = (110...240)V AC/DC	PIR - motion detector	Push-in connection
7L.43.0.230.2200	600	7L.46.0.230.2200	1200	230 = (110...240)V AC/DC	PIR - motion detector	Plug-in connection