



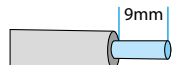




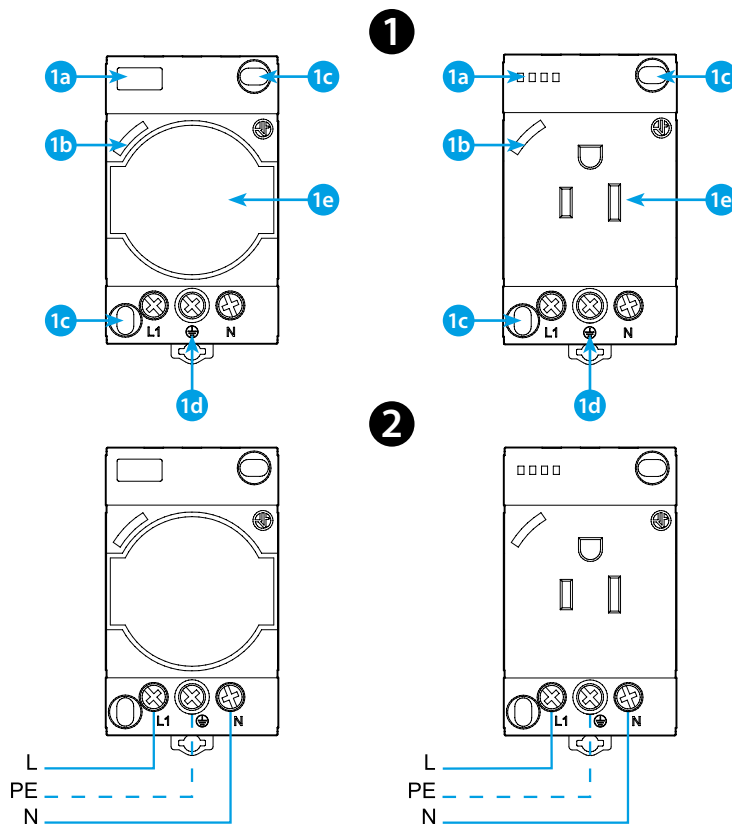
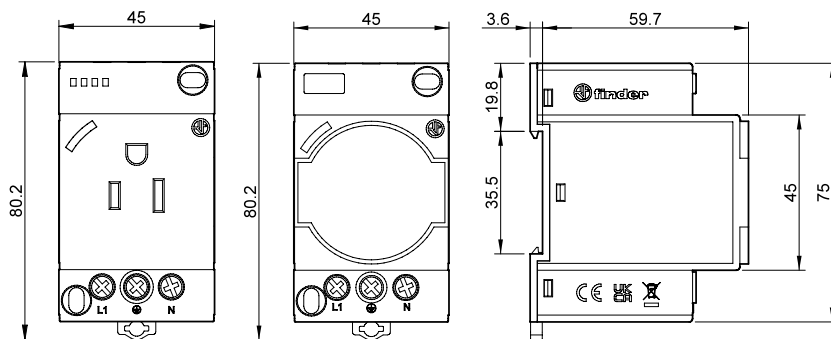
## 7U.0X

	<b>7U.0x.8.230.00xx</b> $U_N$ 250 V AC (50/60 Hz) $I_n$ 16 A <b>7U.02.8.120.00x0</b> $U_N$ 125 V AC (50/60 Hz) $I_n$ 15 A
	(-40...+70)°C
IP 20 - POLLUTION DEGREE 2	

LED	$U_N$
	-
	✓

		
7U.00	MAX (1x10/2x6) mm <sup>2</sup> (1x8/2x10) AWG	MAX (1x10/2x6) mm <sup>2</sup> (1x8/2x10) AWG
7U.01	MIN (1x0.5) mm <sup>2</sup> (1x20) AWG	MIN (1x0.5) mm <sup>2</sup> (1x20) AWG
7U.02	MAX (1x12) AWG MIN (1x20) AWG	MAX (1x12) AWG MIN (1x20) AWG
	60/75°C - Cu CONDUCTOR	

Utility Model - IB7U00001XVXX - 03/25  
Finder S.p.A. con unico socio - 10040 ALMESE (TO) - ITALY



## ENGLISH

### 7U RAIL OR CHASSIS MOUNT POWER OUTLET FOR USE WITHIN ELECTRICAL ENCLOSURES

#### VERSIONS

7U.0x.8.xxx.0000 **no LED**, grey color RAL 7035  
 7U.0x.8.230.0002 **no LED**, yellow color RAL 1021  
 7U.0x.8.xxx.0010 green LED, **grey color RAL 7035**  
 7U.0x.8.230.0012 green LED, **yellow color RAL 1021**

#### 1 FRONT VIEW

- 1a Slot for identification tag
- 1b LED (voltage present at outlet)
- 1c Holes for chassis mounting
- 1d Connection terminals (L, PE, N)
- 1e Alternative plug/socket style according to Type (see table)

TYPE	STANDARD
7U.00	Schuko + italian type F and type L
7U.01	French type E
7U.02	USA type B (NEMA 5-15 R)

#### 2 CONNECTION DIAGRAM



#### ELECTRIC SHOCK HAZARD

#### SAFETY NOTES

Any equipment within an electrical system that remains live after turning off at the main switch, must be marked in compliance with standards DIN VDE 0105-1 and IEC 204-1/EN 60204-1/DIN VDE 0113 Part 1, as well as the VBG 4 accident prevention regulations. For these applications use the yellow power outlet.

7U.0x.8.230.0002 **no LED**, yellow color  
 7U.0x.8.230.0012 green LED, **yellow color**