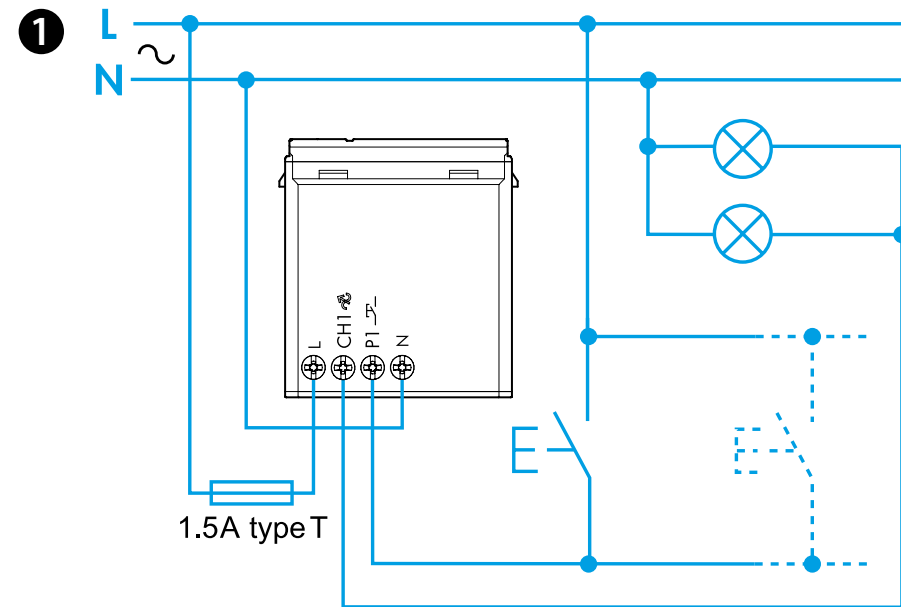




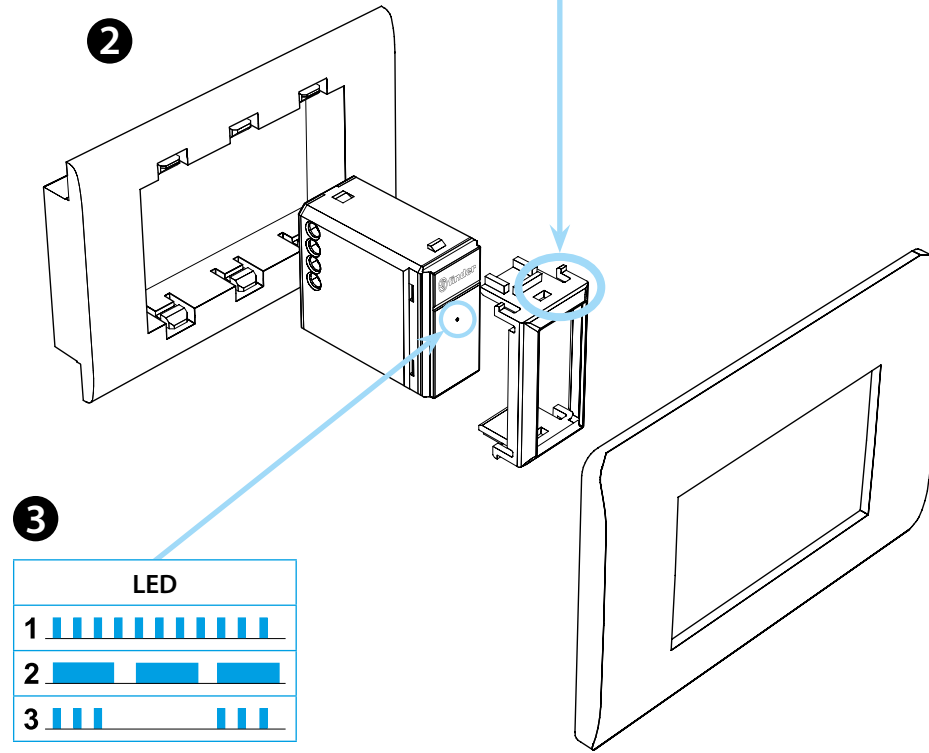
15.71

EN 60669-1/EN 60669-2-1	
	15.71.8.230.Bx0x U <sub>N</sub> 230 V AC (50/60 Hz) U <sub>min</sub> 184 V AC U <sub>max</sub> 253 V AC P 0.4 W
<b>LED</b>	100 W 230 V AC
	200 W 230 V AC
	200 W 230 V AC
	100 W 230 V AC
	200 W 230 V AC
	(-10...+45)°C



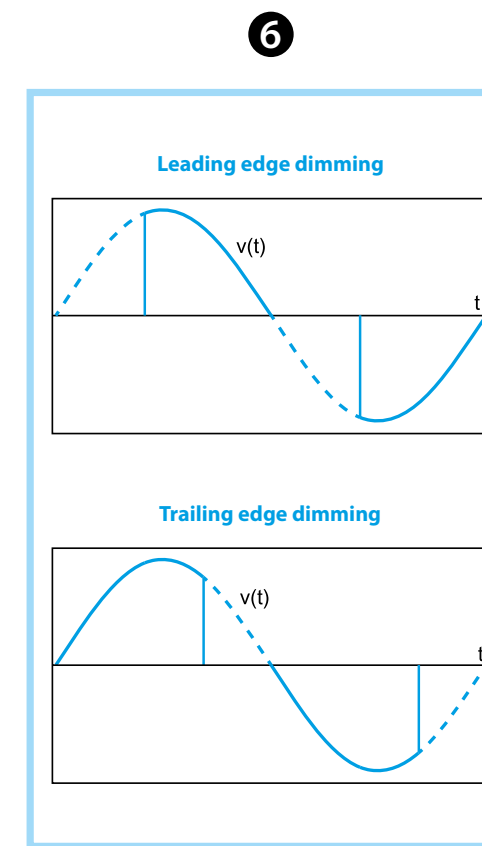
**2a**

AV	Ave S44
BT1	Bticino Living – LivingLight LivingLight Tech – LivingLight Air
BT2	Bticino Axolute
GW	Gewiss – Bticino Matix
GW1	Gewiss System
SU	Simon Urmet Nea
VM1	Vimar Plana – Eikon-Arké
VM2	Vimar Idea



**5**

A	B	C	D
<b>LED</b>	1* TE Trailing Edge		
	2 LE Leading Edge		
	3 TE Trailing Edge		
	4 LE Leading Edge		
	5 TE Trailing Edge		
	6 LE Leading Edge		
	7 LE Leading Edge		
<b>AUTO</b>	<b>AUTOMATIC</b>		



**4**

Download on the App Store

**FINDER YOU**

GET IT ON Google Play

**Bluetooth**

15.71.8.230.B200 DIMMER BLUETOOTH White  
15.71.8.230.B202 DIMMER BLUETOOTH Anthracite

- 1 WIRING DIAGRAM**
- 2 INSTALLATION**  
(See table 2a for compatible systems)  
Note that these trademarks and trade names are not the property of Finder SpA or any of its associated companies, and are referred to in this sheet for the purposes of technical information only.
- 3 LED**  
1 Short circuit. Output disabled  
2 Overtemperature. Output disabled  
3 No load detected during auto recognition of load
- 4 FINDER YOU**  
With the Finder YOU App you can:  
- Set the desired function  
- Adjust the minimum dimming level (range 5% - 60%)  
- Adjust the ON/OFF transition time under short pulse command (0-3s)  
- Adjust the speed of dimming under long pulse command (1s-16s)  
- Set the Memory function  
- Set the Restore after Blackout function  
- Associate the wireless buttons  
- Set the scenario transition time (1s-4s)
- 5 FUNCTIONS**  
\*1 factory pre-set function.  
A Type of connected load:  
- LED (functions 1, 2, 3, 4)  
- Halogen (functions 1, 2)  
- Electronic power supplies (functions 1, 2)  
- CFL (functions 5, 6)  
- Electromechanical power supplies (function 7)  
B Selectable function  
C Regulation method: Trailing Edge - Leading Edge (see point 6)  
D Regulation curve  
(Linear: functions 1-2-7) (Exponential: functions 3-4-5-6)
- NOTE**  
- **Without memory** function: each ON command results in the full brightness level being established  
- **With memory** function: at switch OFF the brightness level is memorised and with the subsequent ON command this level is restored  
- **Short pulse** command: switches alternately between ON and OFF status  
- **Long pulse** command: the light level will increase or decrease progressively, either linearly or exponentially, depending on the function chosen