

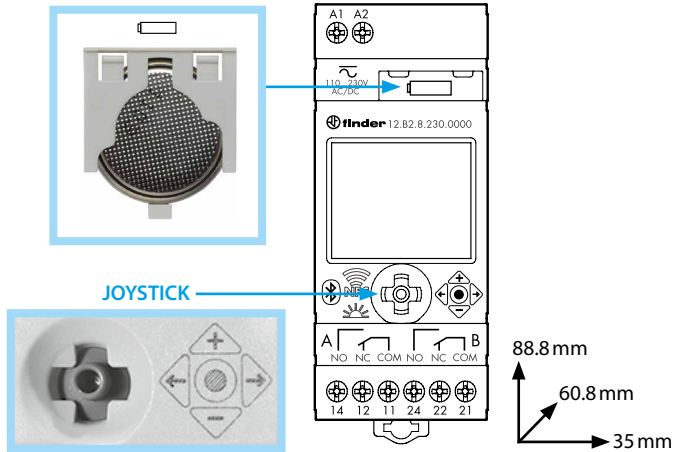
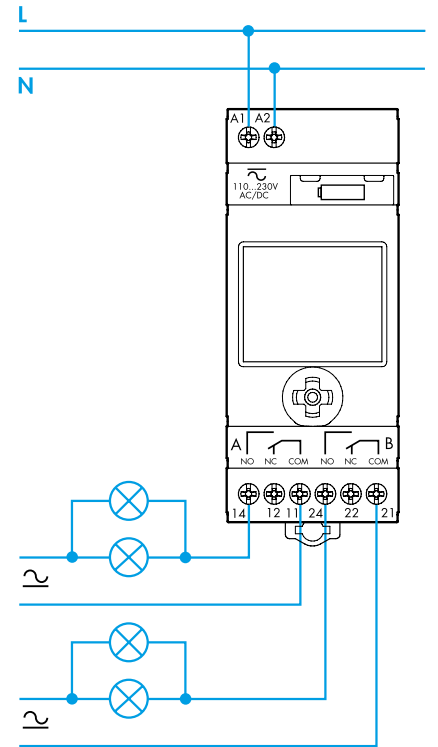


12.B2

EN 60669-1 / EN 60669-2-1	
	<b>12.B2.8.230.0000</b> U <sub>N</sub> 110...230 V AC (50/60 Hz)/DC U <sub>min</sub> - U <sub>max</sub> 88 V - 253 V (AC/DC) P 2.8 VA (50 Hz)/0.9 W
	2 CO (DPDT) 16 A 250 V AC  AC1 4000 VA AC15 (230 V AC) 750 VA
	(230 V) 2000 W (230 V) 750 W CFL-LED (230 V) 400 W
	(-20...+50)°C
IP20	

FULL MANUAL  
WEB







  
  
  
NFC















**MIX**  
Paper | Supporting responsible forestry  
FSC® C110784

- Operating Control, Independently mounted
- Panel mounting, Type 1 Action
- Pollution Degree 2, Impulse Voltage 4000 V
- Terminals nominal torque: 0.8 Nm
- The battery can be replaced only by the manufacturer or competent personnel
- The device can be installed and configured only by the installer or a qualified installer