



12.61



12.62

ENGLISH

12.61/62 DIGITAL TIME SWITCH DAILY/WEEKLY PROGRAMMING
 Programmable with NFC technology with the App FINDER TOOLBOX downloaded from Google Play™ - Apple Store.

1 DISPLAY INDICATORS

- A Setting Menu
- B Days of the week (1=Mon...7=Sun)
- C Holiday program
- D Permanent Manual over-ride activated - channel A
- E Channel A functions (ON, OFF, Pulse)
- F Day - seconds/minutes
- G Channel B functions (ON, OFF, Pulse) (12.62 only)
- H Permanent Manual over-ride activated - channel B (12.62 only)
- I Time, day, month, hours, minutes, daylight saving ON/OFF, holiday program (Start: day/month. Finish: day/month) PIN ON/OFF, End
- L Time switch without power supply (powered by battery) - Low battery (with power supply)
- M Cancel
- N Program number (max 50) - Y(year), D(day), M(month), H(hour), M(minutes), Daylight saving ON/OFF (EU=Europe – BR=Brazil – AU=Australia) Holiday program (Start: day/month. Finish: day/month)
- O Programming

2 SETTINGS (examples)

- 2a Setting: year, day, month, hour, minutes, EU (daylight saving)
- 2b Holiday program (Start: day/month. Finish: day/month), PIN, END

3 PROGRAMMING (examples)

- 3a ON - OFF Function (6:25 ON - 19:15 OFF, Mon, Wed, Fri, Sun)
- 3b PULSE function (11:00 pulse 5 s, Mon Wed Fri)

4 MANUAL MODE

- 4a Manual ON/OFF channel A
- 4b Manual ON/OFF channel B (12.62 only)
- 4c Permanent Manual over-ride ON/OFF - Channel A
- 4d Permanent Manual over-ride ON/OFF - Channel B (12.62 only)

5 DELETION of all program

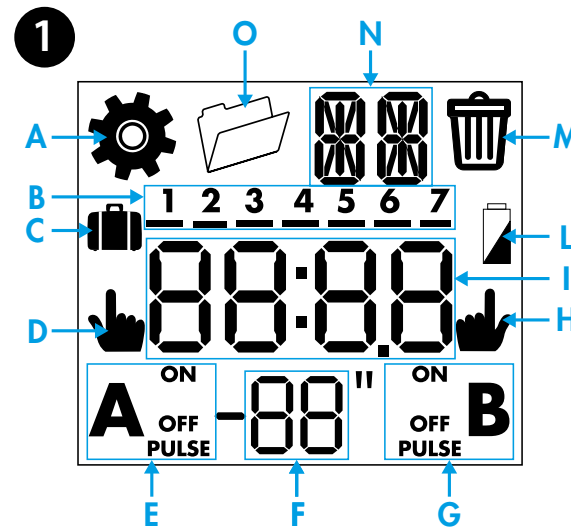
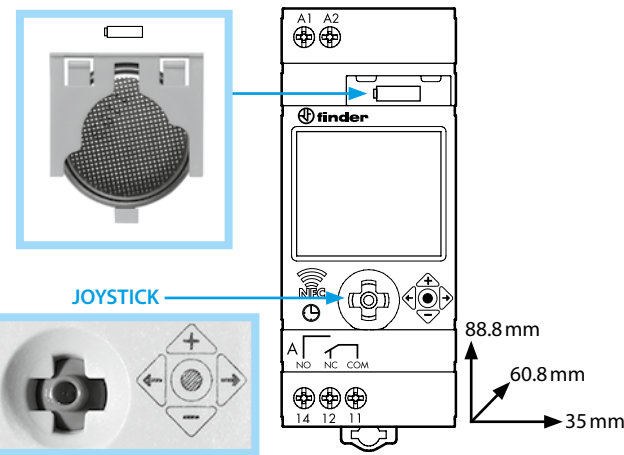
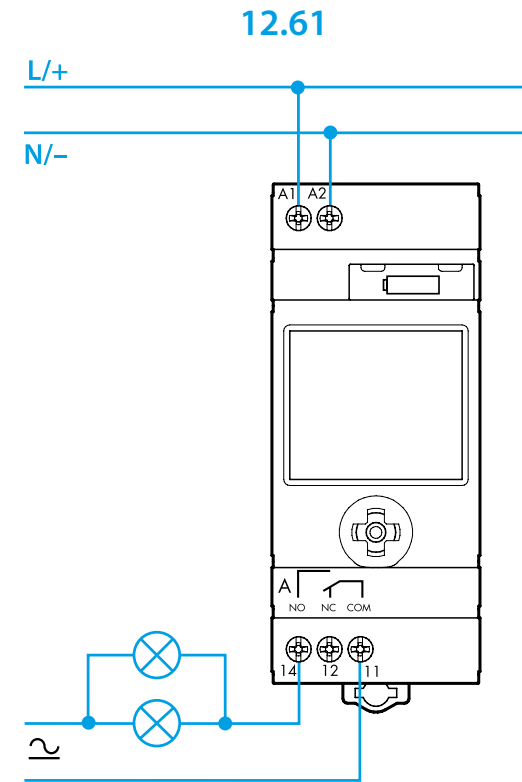
6 DELETION of single program

NOTE

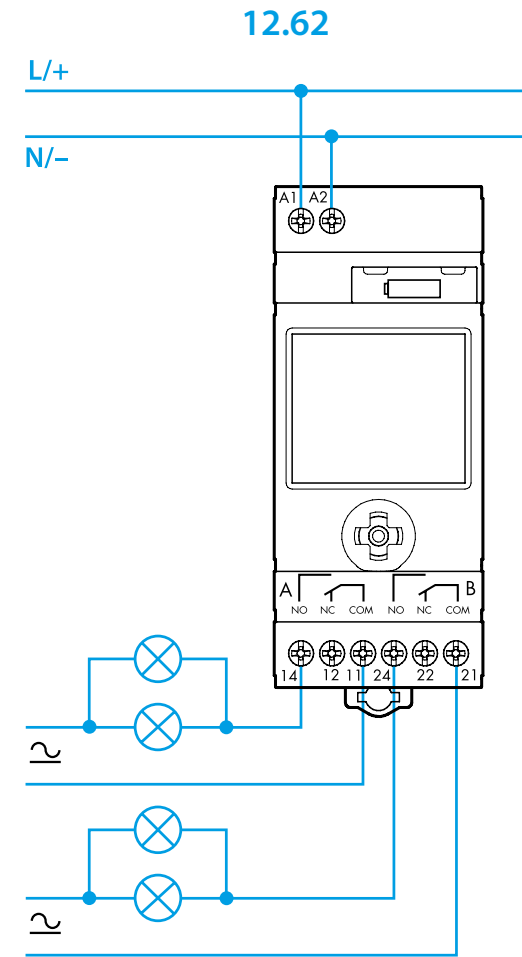
- Battery replacement: BATTERY CR 2032 (LiMnO₂) 3V, 230mAh. Complies with Article 11, EU directive 2006/66/CE. Dispose of batteries according to local regulations
- Back-light display (only with power supply)
- Minimum switching interval: 1 second (pulse function)



	EN 60669-1 / EN 60669-2-1	
	12.6x.8.230.0000 U _N 110...230 V AC (50/60 Hz) / DC U _{min} - U _{max} 88 V - 253 V (AC/DC) P 2.8 VA (50 Hz) / 0.9 W	
	12.61.0.024.0000 U _N 12...24 V AC (50/60 Hz) / DC U _{min} - U _{max} 10 V - 30 V (AC/DC) P 2.2 VA / 1.2 W	
	1 CO (SPDT) (12.61) 2 CO (DPDT) (12.62) 16 A 250 V AC	
	AC1 4000 VA AC15 (230 V AC) 750 VA	
	(230 V) 2000 W	
	(230 V) 750 W	
	CFL-LED (230 V) 400 W	
	(-20...+50)°C	
	IP20	

- Operating Control, Independently mounted
- Panel mounting, Type 1 Action
- Pollution Degree 2, Impulse Voltage 4000 V (800 V for 12...24 V models)
- Terminals nominal torque: 0.8 Nm
- The battery can be replaced only by the manufacturer or competent personnel
- The device can be installed and configured only by the installer or a qualified installer



2 2a

CLICK (LED)

t > 3s

Hold

20 15

+ 2016
- 2014

3006

+ 31
- 29

3006

+ 07
- 05

1038

+ 11
- 09

1038

+ 39
- 37

EU on

+ BR ON
- AU ON
- OFF

2b

A OFF OFF B

+ 01...02...
- 31...30...

Pin off

+
-

End

CLICK EXIT

Pin on

0000

+ 01
- 99

0000

+ 01
- 99

CLICK

End

CLICK EXIT



A OFF OFF B

+ 01...02...
- 31...30...

1506

+ 16
- 14

1506

+ 07
- 05

2009

+ 21
- 19

2009

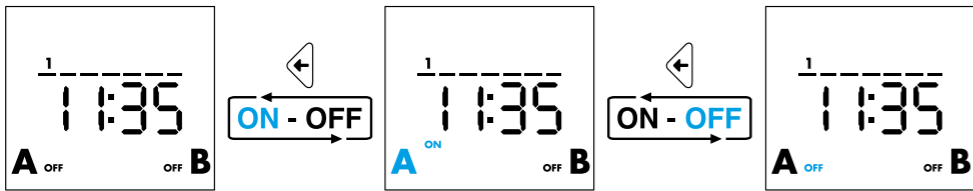
+ 10
- 08

Pin off

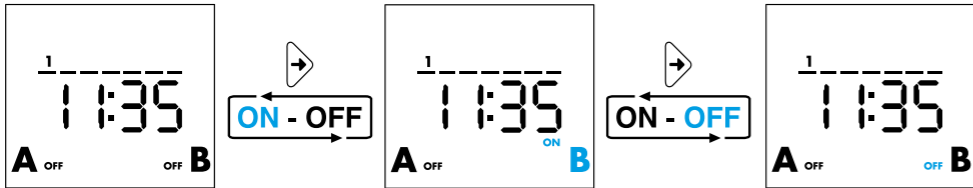
+
-

4

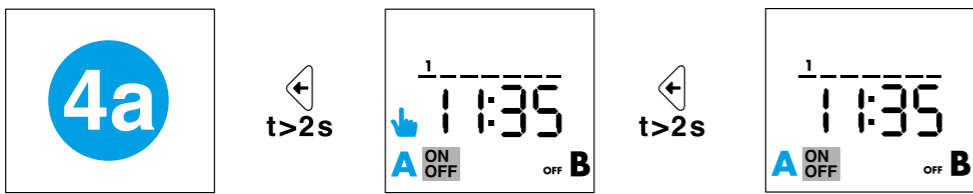
4a



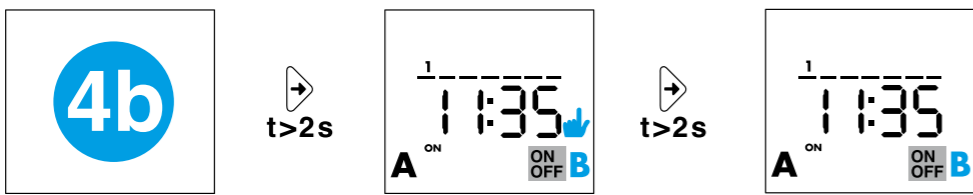
4b



4c



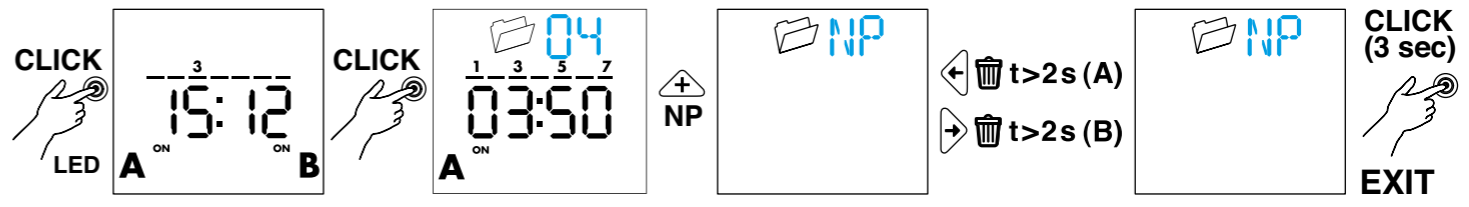
4d



5

IT CANCELLAZIONE DI TUTTI I PROGRAMMI
 EN DELETION OF ALL PROGRAM
 FR SUPPRESSION DE TOUS LES PROGRAMMES
 DE LÖSCHEN ALLER PROGRAMME
 NL WISSEN VAN ALLE PROGRAMMA'S
 PT ELIMINAÇÃO DE TODO PROGRAMA
 ES BORRAR TODOS LOS PROGRAMAS

HU AZ ÖSSZESES PROGRAM TÖRLÉSE
 CS ODSTRANĚNÍ VŠECH PROGRAMU
 PL USUNIĘCIE WSZYSTKICH PROGRAMÓW
 RO ȘTERGE TOATE PROGRAMELE
 RU УДАЛЕНИЕ ВСЕХ ПРОГРАММ
 EL ΔΙΑΓΡΑΦΗ ΌΛΩΝ ΤΩΝ ΠΡΟΓΡΑΜΜΑΤΩΝ
 AR محو كل البرامج



6

IT CANCELLAZIONE DI UN SINGOLO PROGRAMMA
 EN DELETION OF SINGLE PROGRAM
 FR SUPPRESSION D'UN SEUL PROGRAMME
 DE LÖSCHEN EINES PROGRAMMES
 NL WISSEN VAN EEN ENKEL PROGRAMMA
 PT ELIMINAÇÃO DE PROGRAMA INDIVIDUAL
 ES BORRAR UN PROGRAMA

HU EGY PROGRAM TÖRLÉSE
 CS ODSTRANĚNÍ JEDNOHO PROGRAMU
 PL USUNIĘCIE JEDNEGO PROGRAMU
 RO ȘTERGE UN SINGUR PROGRAM
 RU УДАЛЕНИЕ ОДНОЙ ПРОГРАММЫ
 EL ΔΙΑΓΡΑΦΗ ΕΝΟΣ ΠΡΟΓΡΑΜΜΑΤΟΣ
 AR محو برنامج واحد

