


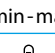

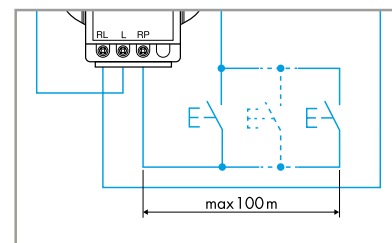
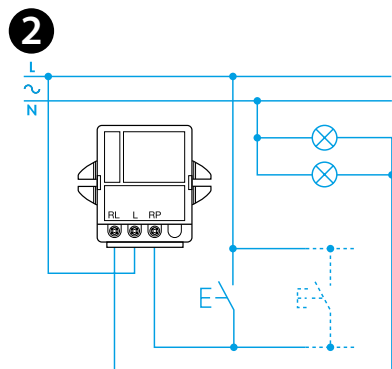
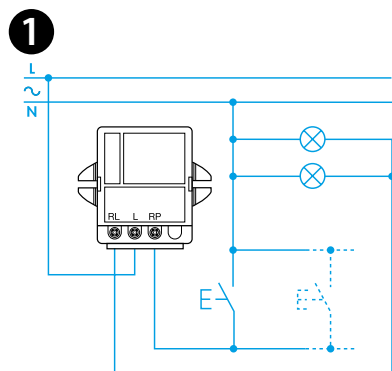
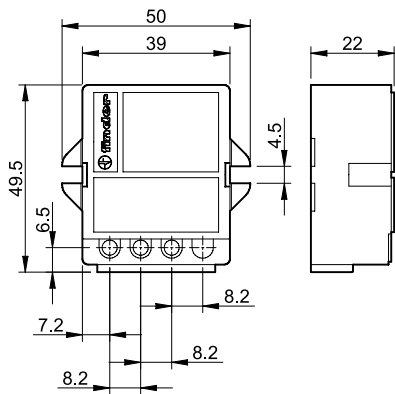




15.51

	15.51.8.230.0400 U_N 230 V AC (50 Hz) U_{min} 184 V AC U_{max} 253 V AC
	15.51.8.230.0404 U_N 230 V AC (50 Hz) U_{min} 184 V AC U_{max} 253 V AC
	15.51.8.230.0460 U_N 230 V AC (60 Hz) U_{min} 184 V AC U_{max} 253 V AC
	15.51.8.230.0404 U_N 230 V AC (50 Hz) U_{min} 184 V AC U_{max} 253 V AC
 P(min - max)	(10-400*)W 230 V AC
 LED 0% 100% P(min - max)	(10-50)W 230 V AC (Trailing edge)
	(-10...+50)°C
IP20	



ENGLISH

15.51 DIMMER

- 1** 3 WIRE CONNECTION DIAGRAM
- 2** 4 WIRE CONNECTION DIAGRAM
- 3** STEP DIMMING (15.51.8.230.0400 / 0460)
 - 3a Operating mode 1 (with memory)
 - 3b Operating mode 2 (without memory)
- 4** LINEAR DIMMING (15.51.8.230.0404)
 - 4a Operating mode 1 (with memory)
 - 4b Operating mode 2 (without memory)

OPERATING MODE SETUP

It is possible to select the required operating mode using the follow steps:

- a) Remove the supply voltage
- b) Press the control button
- c) Apply the supply to the relay, keeping the button closed for 3 second.
- d) On button release, the light will flash twice to indicate the selection of operating mode 2, or flash once for operating mode 1. Repeating the above steps will alternately change between operating modes

NOTE

In case of supply interruption, the relay switches Off. On resumption of the supply voltage, the relay will remain in the Off position (for operating mode 1 the previous light level remains memorized).

WARNING

The dimmer will turn the output off if the internal thermal protection circuit detects an unsafe temperature due to an overload or incorrect installation. It is possible to re-establish dimmer control, through the push-button, only when the temperature has reduced to a safe level. If the lighting load comprises low voltage halogen lamps fed through either electronic or toroidal electromagnetic transformers, then do not connect more than one transformer per dimmer. Also, it is essential not to drive toroidal electromagnetic transformers without the lamp load connected. It is not recommended the use of "traditional" electromagnetic transformers. It is not recommended to mount more than one dimmers in the same wall box, unless adequate ventilation is provided or the lamp load is less than 100 W. It is necessary to protect the dimmer using a 5x20 mm fuse, 2,5 A 250 V rated, T type with high breaking capacity.

NOTE

Panel mount. Fix the relay with \varnothing 4 mm screws.
 *Toroidal electromagnetic transformers for LV halogen 300 W.

