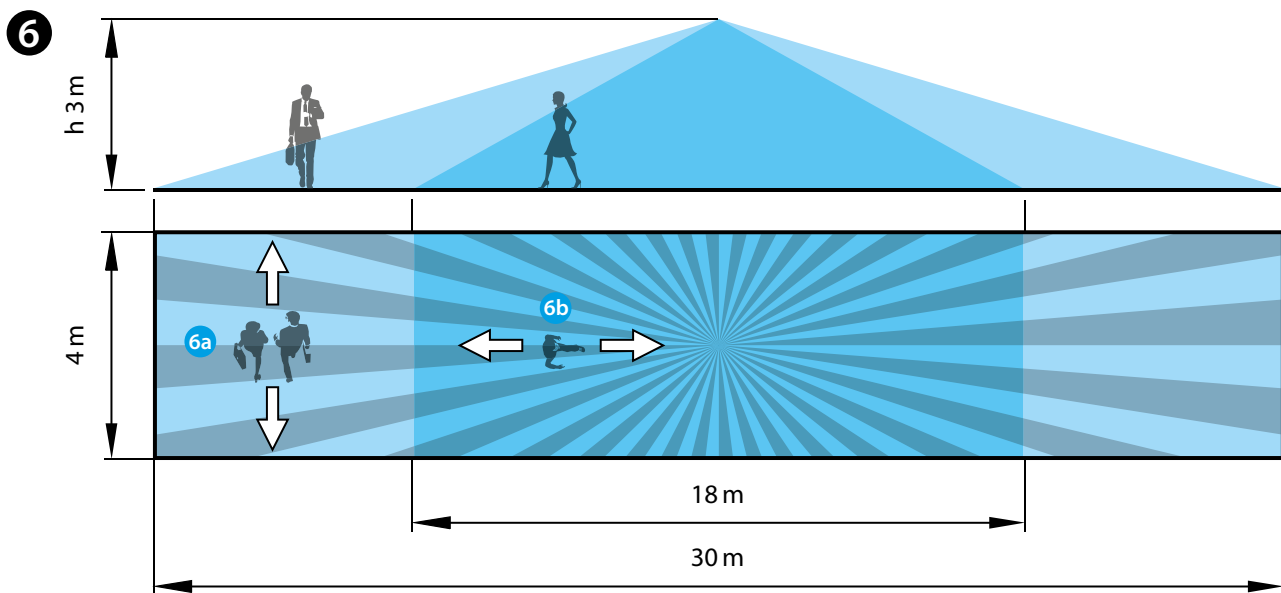
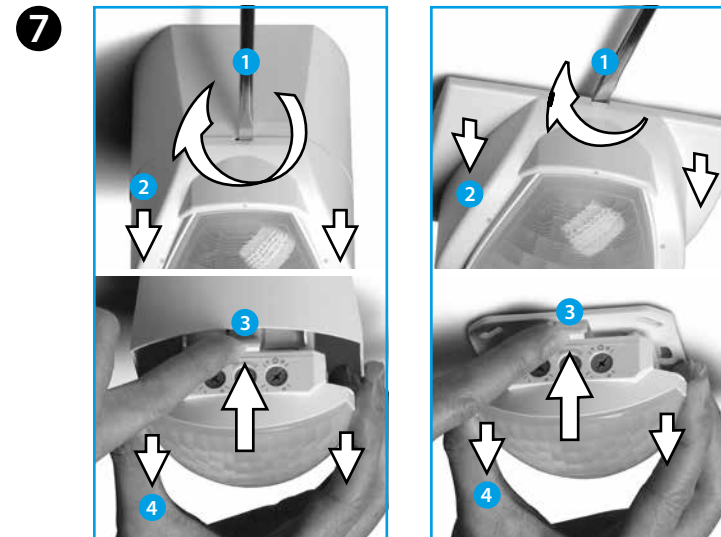
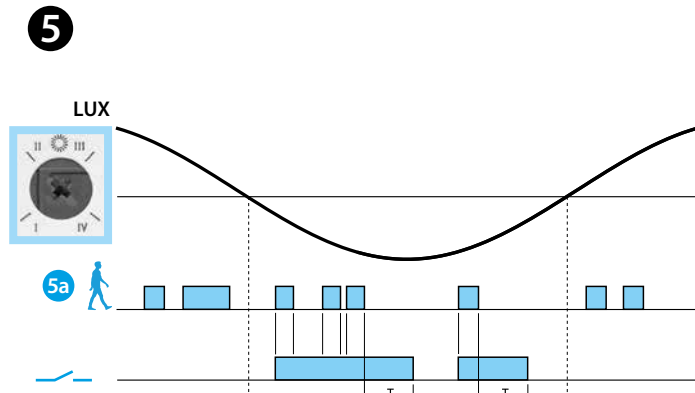
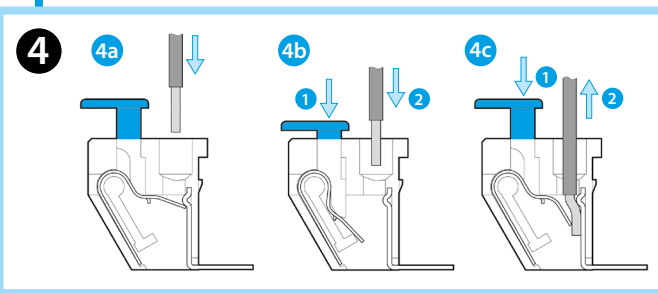
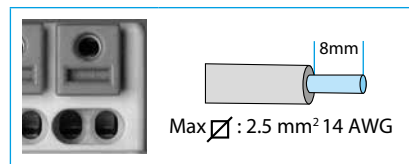
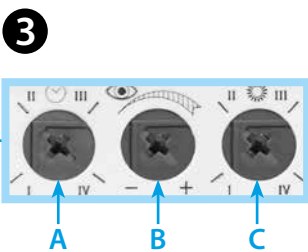
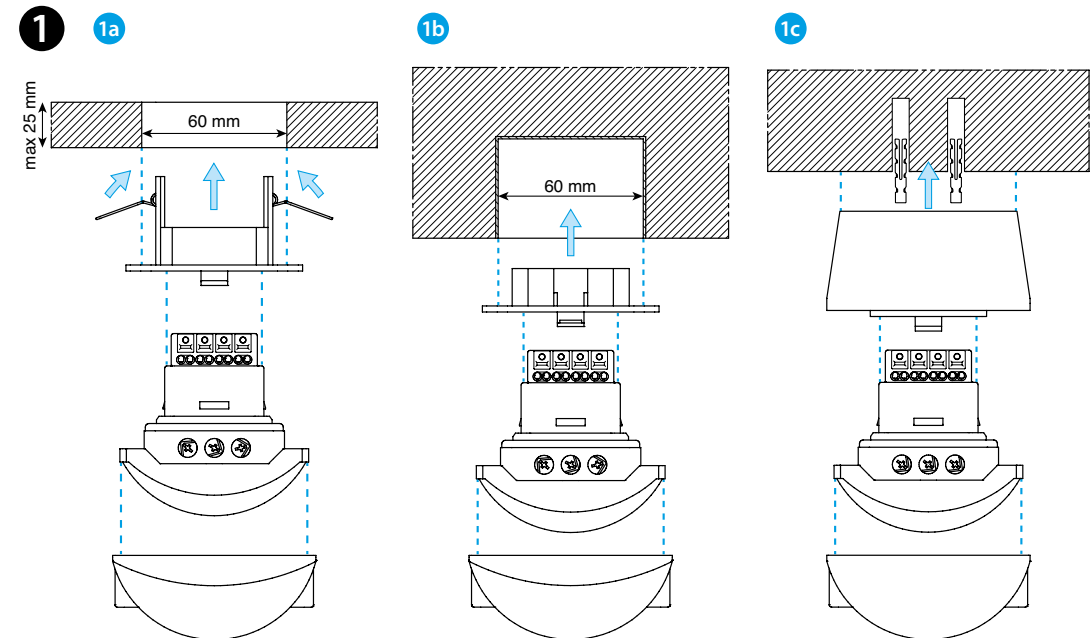
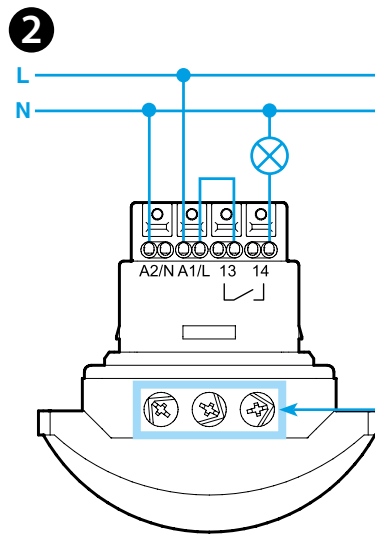




18.41

EN 60669-1 / EN 60669-2-1	
<b>18.41.8.230.0300</b>	
U <sub>N</sub> (110...230)V AC (50/60 Hz)	
U <sub>min</sub> 96 V AC	
U <sub>max</sub> 253 V AC	
P 1.5 VA (50 Hz) / 1 W	
1 NO (SPST-NO)	
10 A 250 V AC	
AC1	2500 VA
AC15	450 VA
(230 V)	1000 W
(230 V)	350 W
CFL-LED (230 V)	300 W
(-10...+50)°C	
IP40	



# ENGLISH

## 18.41 PIR MOVEMENT DETECTOR FOR CORRIDORS

- INSTALLATION**
    - 1a Suspended ceiling mounting
    - 1b Recess mounting
    - 1c Surface mounting
  - WIRING DIAGRAM**
  - SETTINGS**
    - A turn-off delay setting (I=12s; II=3 min; III=15 min; IV=35 min)
    - B sensitivity setting: Adjust sensitivity to suit the location and avoid false triggering
    - C ambient light intervention threshold setting (I=1lx; II=10lx; III=500lx; IV= always ON (∞ lx))
  - TERMINAL PUSH-IN CONNECTION**
    - 4a Connection - solid cable or with ferrules
    - 4b Connection - stranded cable
    - 4c Disconnection
  - FUNCTION CHART**
    - 5a Detection of movement
    - Output Contact
  - SENSING AREA**
    - Sensing area (h=3 m): 30m length - 4m width
    - 6a Tangential movement
    - 6b Radial movement
  - DISMOUNTING**
- NOTE**  
Following the initial power-on, and power-on following a power interruption, the detector makes a hardware-software initialisation for approximately 30 seconds.