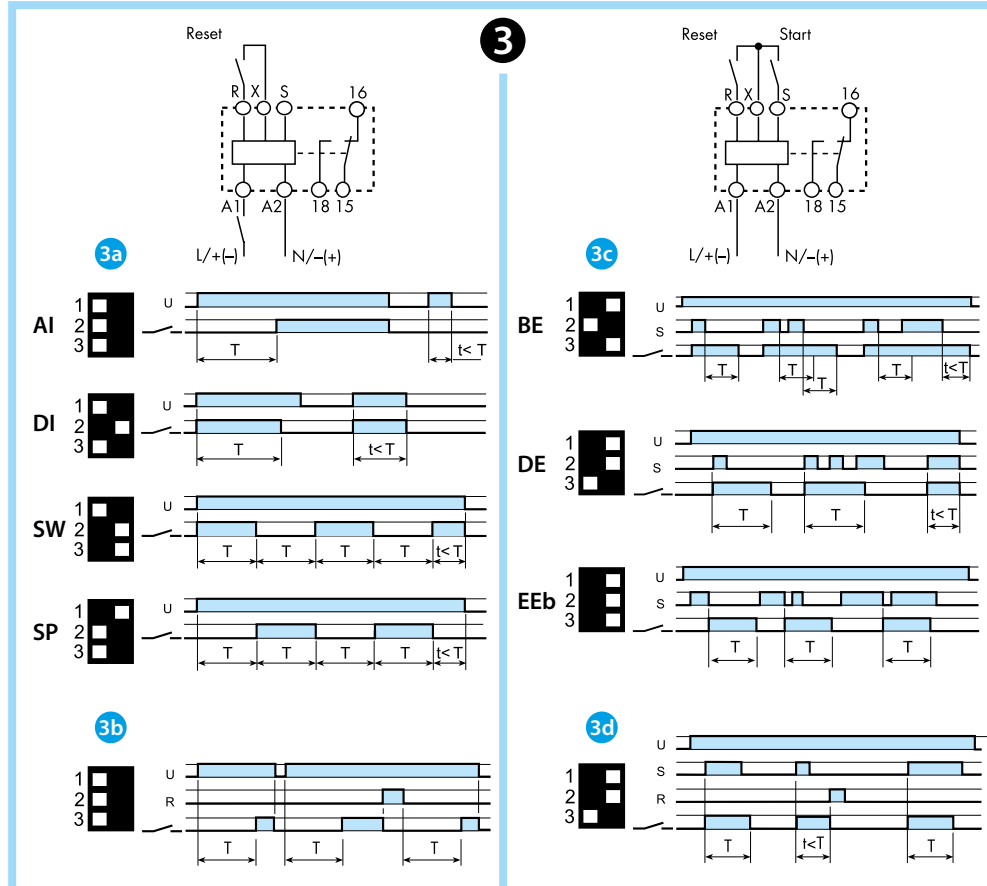
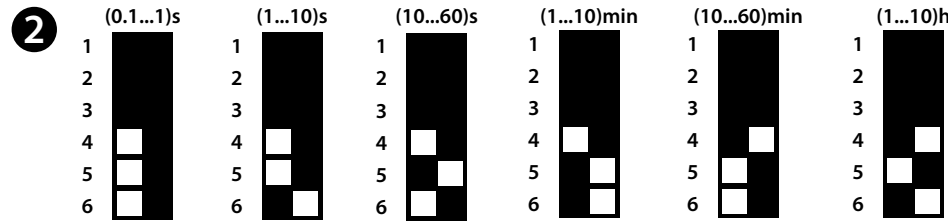
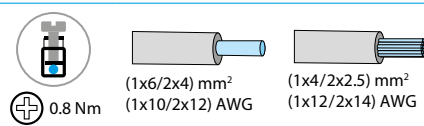
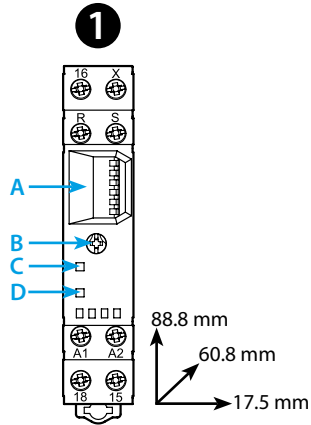




**81.01**

	<b>81.01.0.230.0000</b> U <sub>N</sub> (12...230) V AC (50/60 Hz) / DC U <sub>min</sub> 10.8 V AC / DC U <sub>max</sub> 250 V AC / DC P < 2 VA / < 2 W
	1CO (SPDT) 16 A 250 V AC  AC1 4000 VA AC15 (230 V AC) 750 VA M (230 V AC) 0.55 kW DC1 (30/110/220) V (16/0.3/0.12) A
	(-10...+50)°C
IP20	



# ENGLISH

## 81.01 MODULAR TIMER MULTI-FUNCTION WITH START AND RESET

- 1 FRONT VIEW**
- A Dip Switch for functions and time scale setting
  - B Time setting
  - C LED: supply ON
  - D LED: relay ON

**2 TIME SCALES**

**3 WIRING DIAGRAM AND FUNCTIONS**

**3a Without signal START functions**

Start via contact in supply line (A1)

- AI On-delay
- DI Interval
- SW Symmetrical flasher (starting pulse on)
- SP Symmetrical flasher (starting pulse off)

**3b RESET function (R) (example)**

**3c External START functions**

Start via contact into control terminal (S, X)

- BE Off-delay with control signal
- DE Interval with control signal on
- EEb Interval with control signal off

**3d RESET function (R) (example)**

**NOTE**

Do not connect the R, X, S terminals to supply voltage.  
Time scales and functions must be set before energising the timer.  
Minimum control impulse time 50 ms.  
Recovery time ≤50 ms.  
35 mm rail mounting (EN 60715).