

7F SERIES Filter Fans and Exhaust Filters



Design by MINELLI | FOSSATI

Filter Fans from size 1 to size 5

To ensure the performance of components and instrumentation within control panels and enclosures.

- Operating voltage: 120 V AC, 230 V AC or 24 V DC (according to type)
- Quick replaceable filter
- Minimal depth within enclosure
- Air volume (17...412)CFM
- Time-saving installation and maintenance
- Very low acoustic noise
- Protection category: UL Type 12 / IP54
- Black color RAL 9004 available
- Dimensions from 4" up to 12"

Approvals (according to type)



Available versions

Standard Filter Fan	Operating voltage (V AC)	Operating voltage (V DC)	Air volume (CFM)	Rated power (W) 50/60 Hz	Size	Standard Exhaust Filter	Reverse flow versions	Filter mat
7F.20.8.120.1020	120 V AC	—	17	21	1 (4")	7F.02.0.000.1000	7F.21.8.120.1020	07F.15
7F.20.8.230.1020	230 V AC	—	17	18	1 (4")	7F.02.0.000.1000	7F.21.8.230.1020	07F.15
7F.20.9.024.1020	—	24 V DC	14	3.6	1 (4")	7F.02.0.000.1000	7F.21.9.024.1020	07F.15
7F.20.8.120.2055	120 V AC	—	37	25	2 (6")	7F.02.0.000.2000	7F.21.8.120.2055	07F.25
7F.20.8.230.2055	230 V AC	—	37	25	2 (6")	7F.02.0.000.2000	7F.21.8.230.2055	07F.25
7F.20.9.024.2055	—	24 V DC	32	7	2 (6")	7F.02.0.000.2000	7F.21.9.024.2055	07F.25
7F.20.8.120.3100	120 V AC	—	68	25	3 (8")	7F.02.0.000.3000	7F.21.8.120.3100	07F.35
7F.20.8.230.3100	230 V AC	—	68	25	3 (8")	7F.02.0.000.3000	7F.21.8.230.3100	07F.35
7F.20.9.024.3100	—	24 V DC	59	7	3 (8")	7F.02.0.000.3000	7F.21.9.024.3100	07F.35
7F.20.8.120.4250	120 V AC	—	174	48	4 (10")	7F.02.0.000.4000	7F.21.8.120.4250	07F.45
7F.20.8.230.4250	230 V AC	—	174	50	4 (10")	7F.02.0.000.4000	7F.21.8.230.4250	07F.45
7F.20.9.024.4250	—	24 V DC	147	43	4 (10")	7F.02.0.000.4000	7F.21.9.024.4250	07F.45
7F.20.8.120.4400	120 V AC	—	262	120	4 (10")	7F.02.0.000.4000*	7F.21.8.120.4400	07F.46
7F.20.8.230.4400	230 V AC	—	262	112	4 (10")	7F.02.0.000.4000*	7F.21.8.230.4400	07F.46
7F.20.8.120.5550	120 V AC	—	356	102	5 (12")	7F.02.0.000.5000**	7F.21.8.120.5550	07F.56
7F.20.8.230.5550	230 V AC	—	356	116	5 (12")	7F.02.0.000.5000**	7F.21.8.230.5550	07F.56
7F.20.8.120.5700	120 V AC	—	412	140	5 (12")	7F.02.0.000.5000	7F.20.8.120.5700	07F.55
7F.20.8.230.5700	230 V AC	—	412	120	5 (12")	7F.02.0.000.5000	7F.20.8.230.5700	07F.55

* 07F.45 for 7F.02.0.000.4000
 ** 07F.55 for 7F.02.0.000.5000

Type 7F.2x.x.xxx.1020
 Type 7F.2x.x.xxx.1020
 Type 7F.2x.x.xxx.2055
 Type 7F.2x.x.xxx.3100



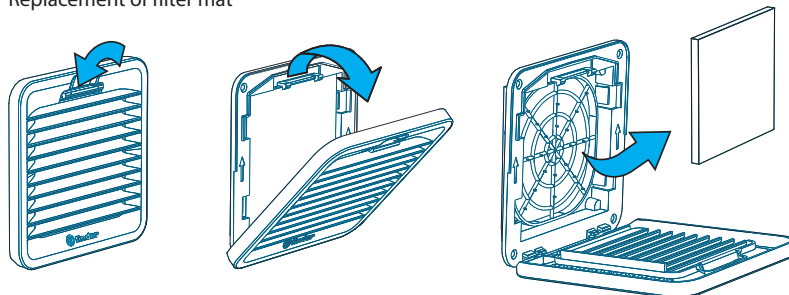
Type 7F.2x.x.xxx.4250
 Type 7F.2x.x.xxx.4400



Type 7F.2x.8.xxx.5550
 Type 7F.2x.8.xxx.5700



Replacement of filter mat



Mounting arrangement of Filter Fan and Exhaust Filter

